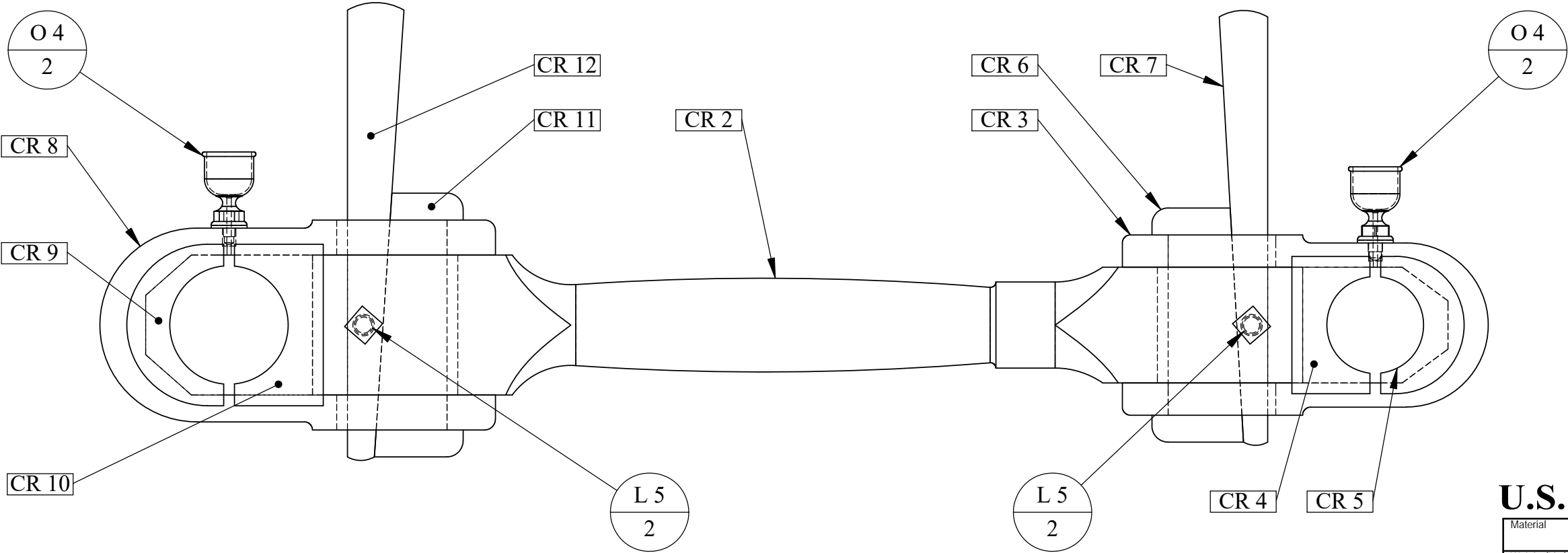
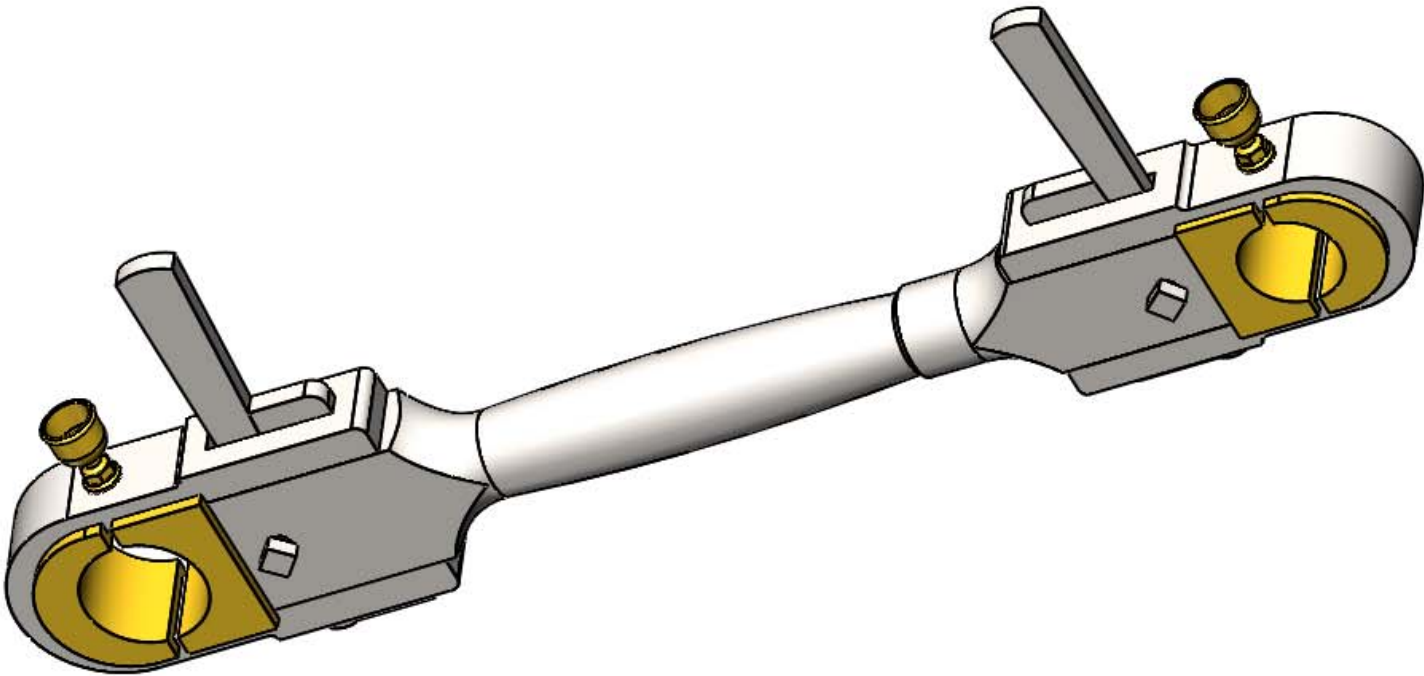


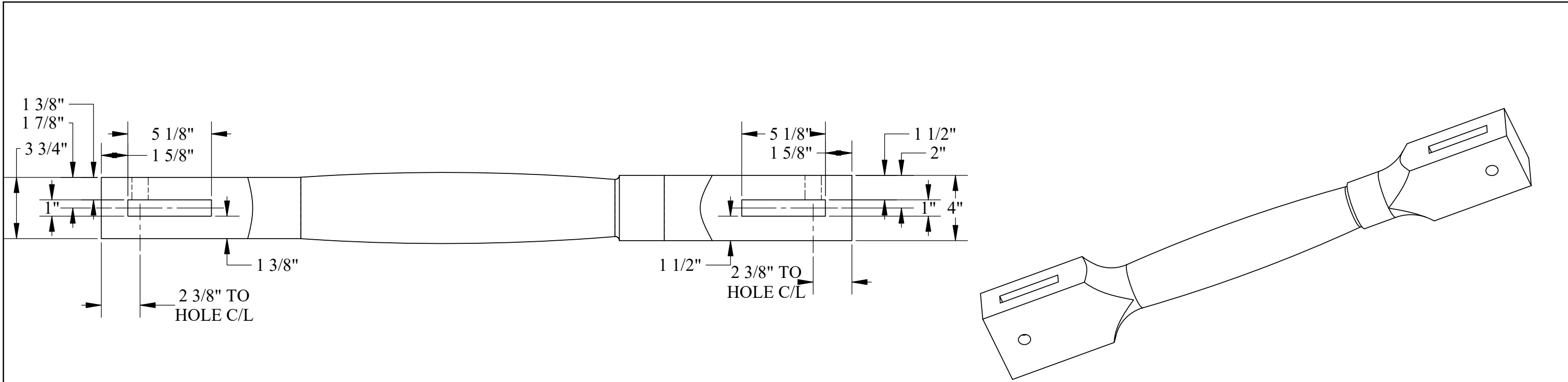
PART NUMBER	DESCRIPTION	QTY.
CR 2	Connecting Rod Standard	1
CR 3	Connecting Rod Bearing Strap-Small	1
CR 4	Connecting Rod Bearing-Small-A	1
CR 5	Connecting Rod Bearing-Small-B	1
CR 6	Connecting Rod Gib	1
CR 7	Connecting Rod Bearing-Cotter Pin	1
CR 8	Bearing Strap-Large	1
CR 9	Connecting Rod Bearing-Large-B	1
CR 10	Connecting Rod Bearing-Large A	1
CR 11	Large Gib	1
CR 12	Large Cotter pin	1
L 5	Square Locking Screw 7/8" x 1-3/4"	2
O 4	Oil Cup- Large	2



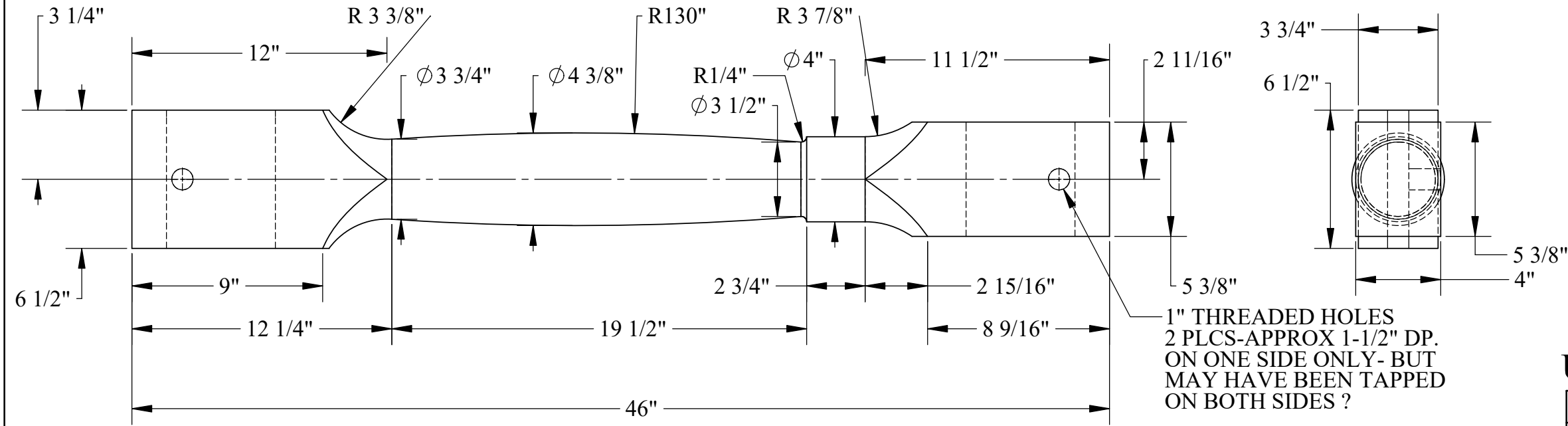
U.S.S. Monitor Steam Engine

Material	Drawn By - Date	Sub-Assembly
Weight (Lbs) 439.73	RWC 12-2018	Connecting Rods
Scale 1:8	Connecting Rod Assembly	
Part # CR 1		

© 2018 R.W.Carlstedt

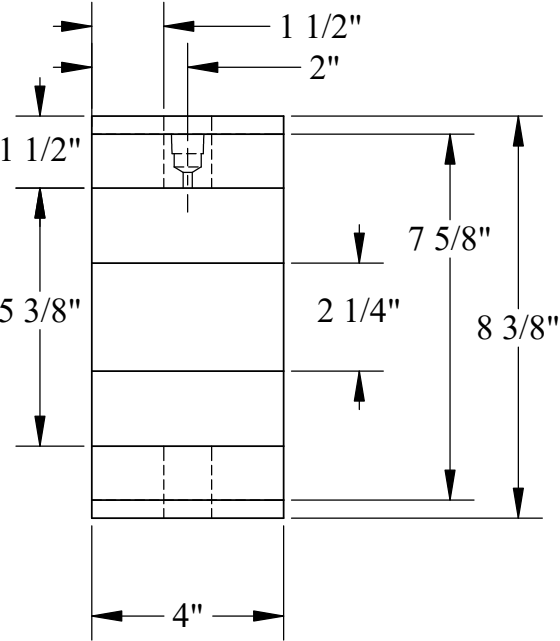
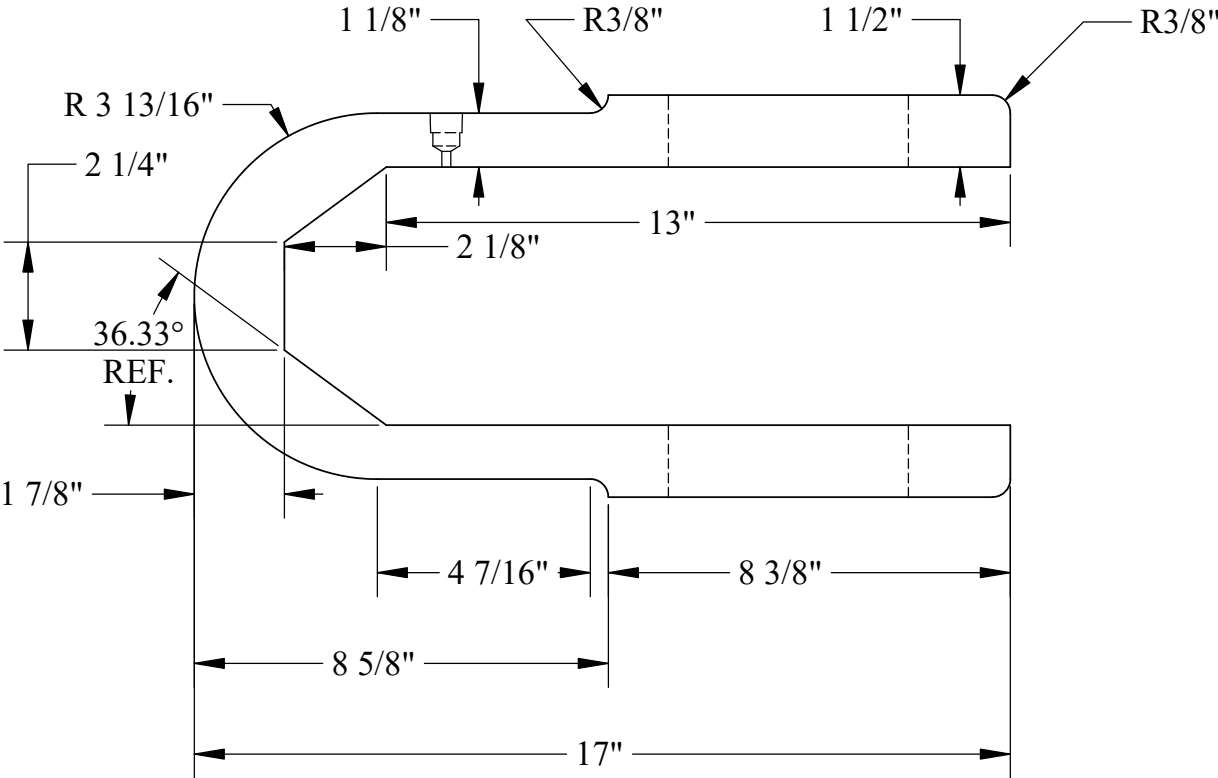
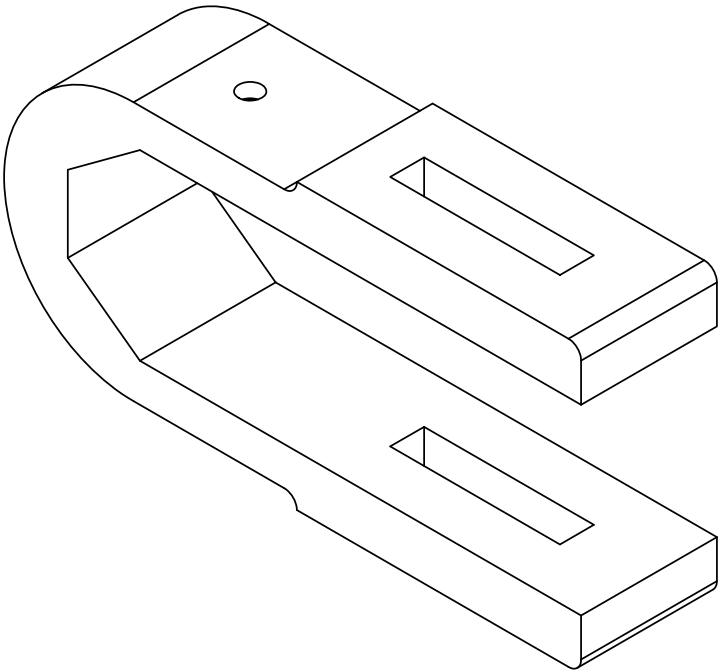
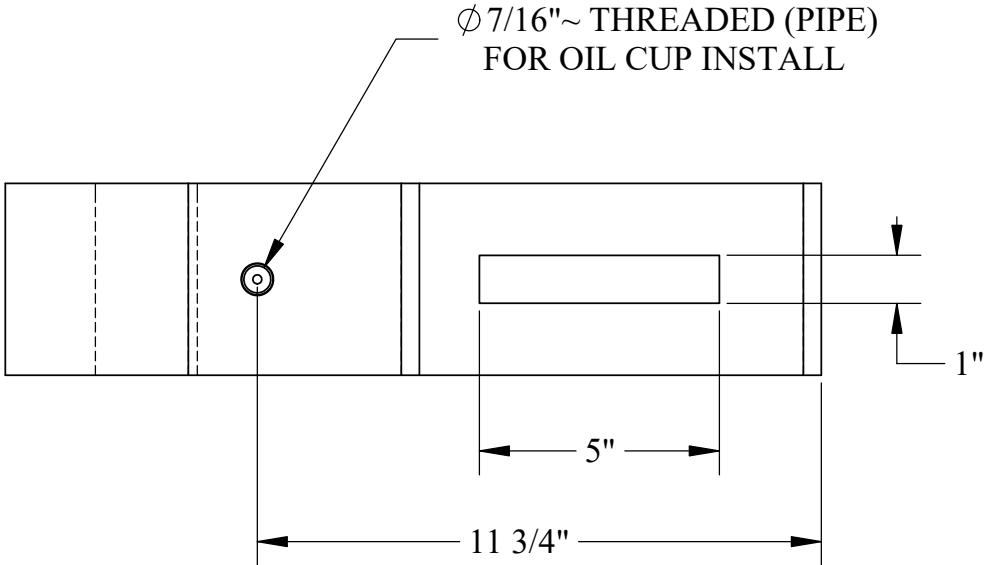


THE ABOVE VIEW AT 1:8 SCALE
IS WHAT WOULD BE SEEN FROM THE
FRONT OF THE ENGINE -LOOKING AFT- AT THE PORT CONNECTING ROD-
THE HEAVIER END OF THE STANDARD IS ON THE MAIN THROW
OF THE CRANKSHAFT (AND LOWER) AND THE COTTER LOCK SCREWS
IN THE HOLES WOULD FACE FORWARD--- BUT FACE AFT ON STARBOARD SIDE !



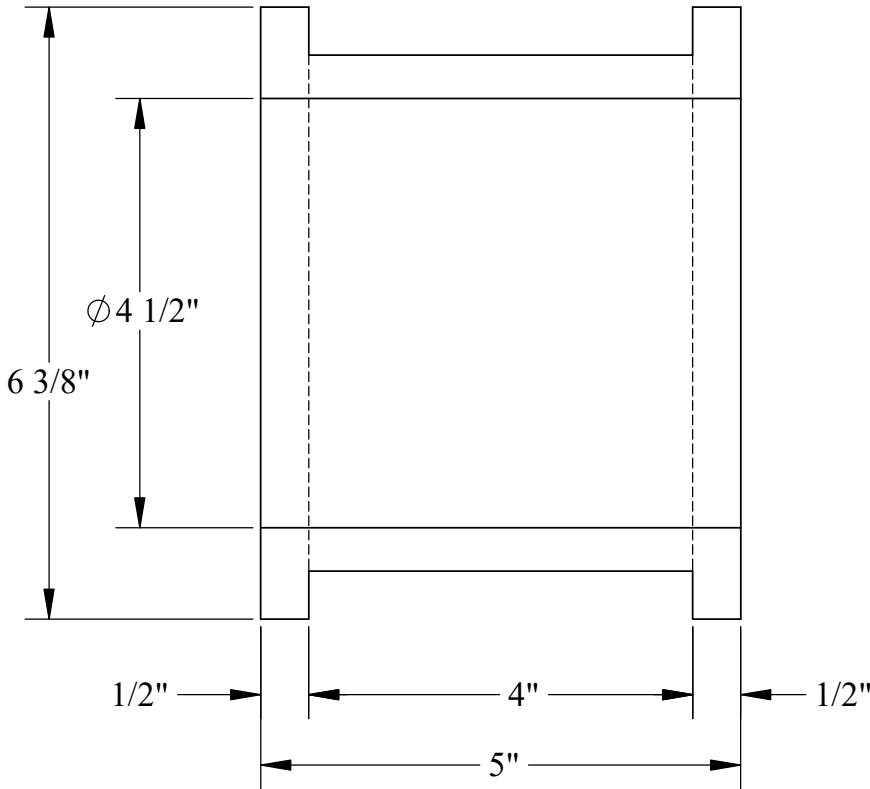
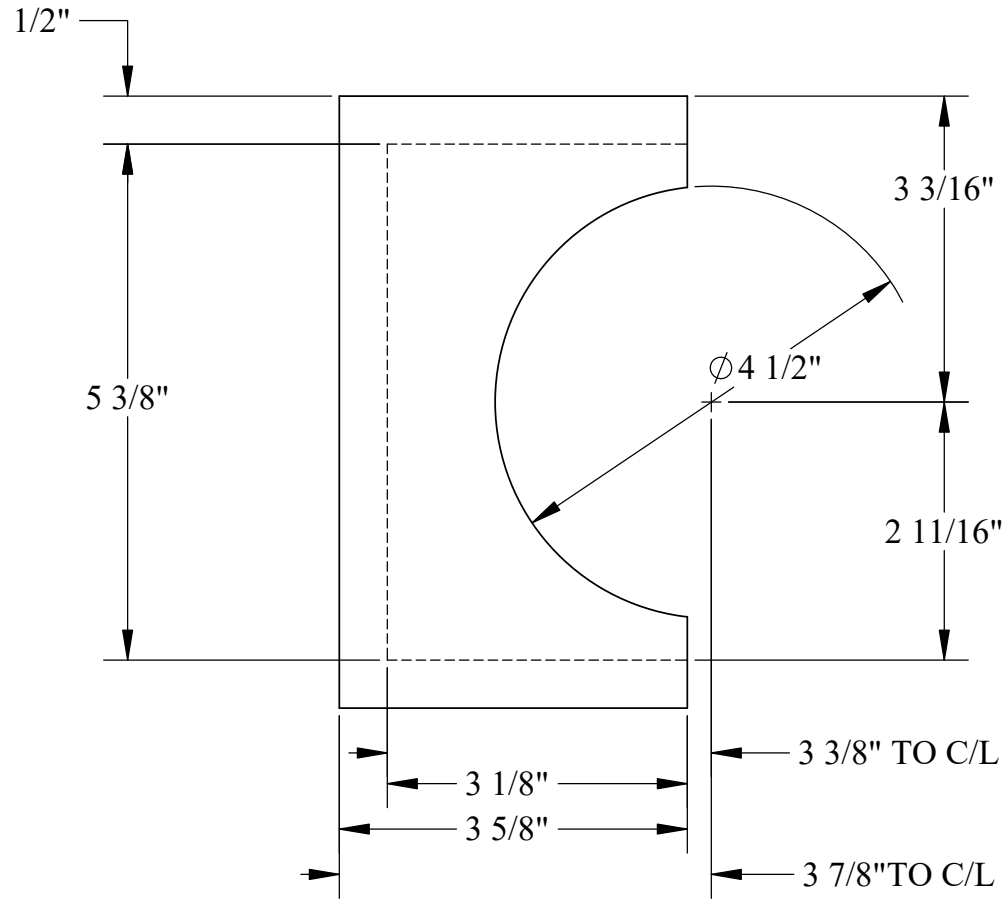
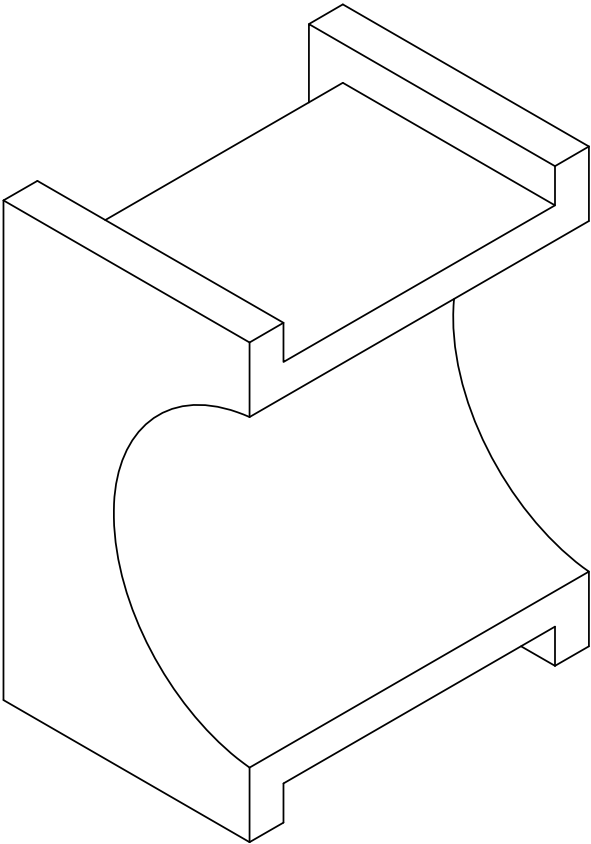
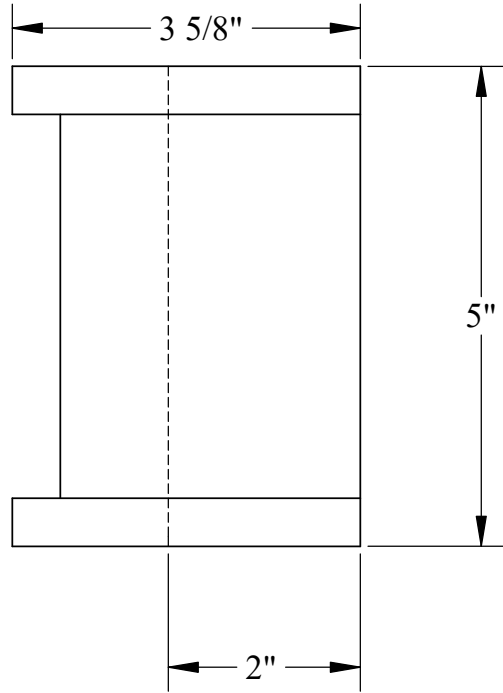
U.S.S. Monitor Steam Engine

Material STEEL	Drawn By - Date RWC 10-2018	Sub-Assembly Connecting Rods
Weight (Lbs) 208.70	Connecting Rod Standard	
Scale 1:6		
Part # CR 2		



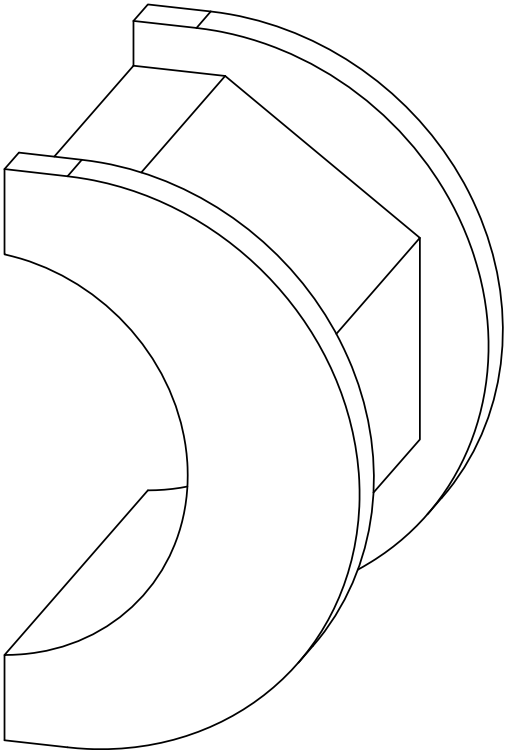
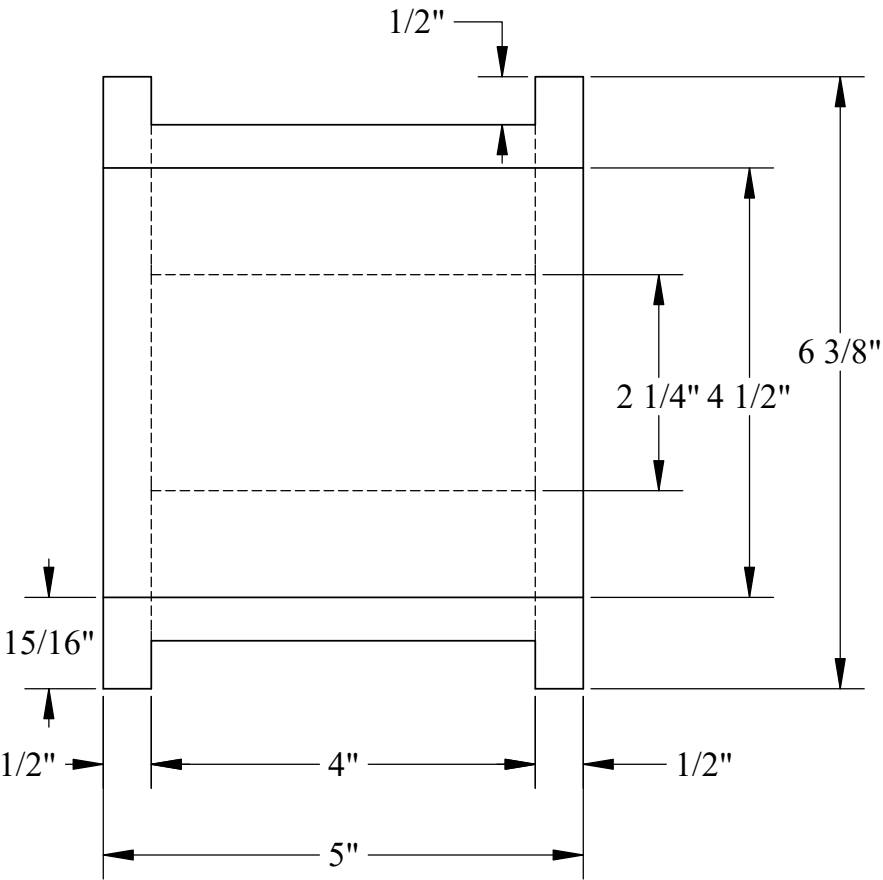
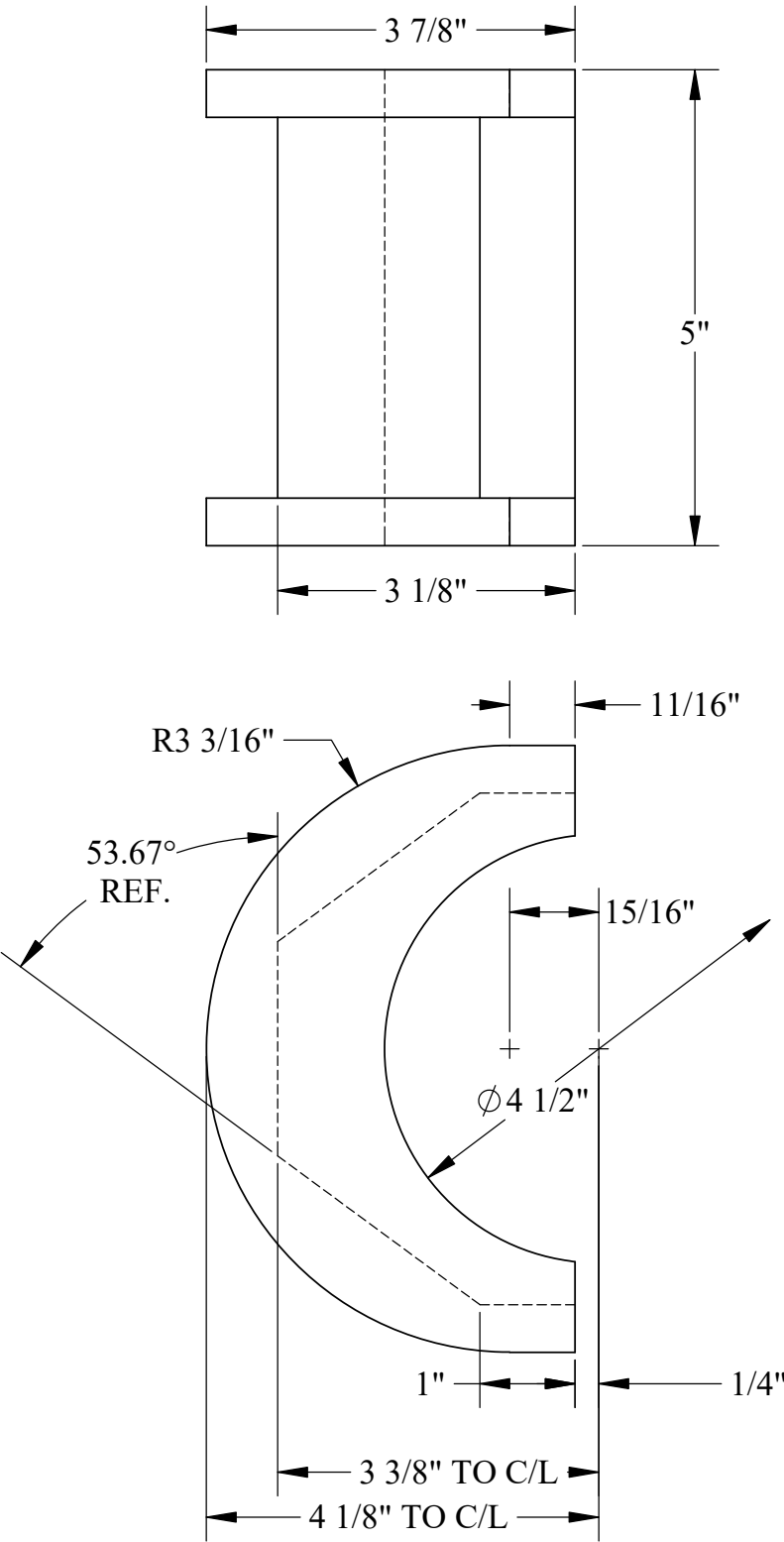
U.S.S. Monitor Steam Engine

Material STEEL	Drawn By - Date RWC 10-2018	Sub-Assembly Connecting Rods
Weight (Lbs) 54.66	Connecting Rod Bearing Strap-Small	
Scale 1:4		
Part # CR 3		



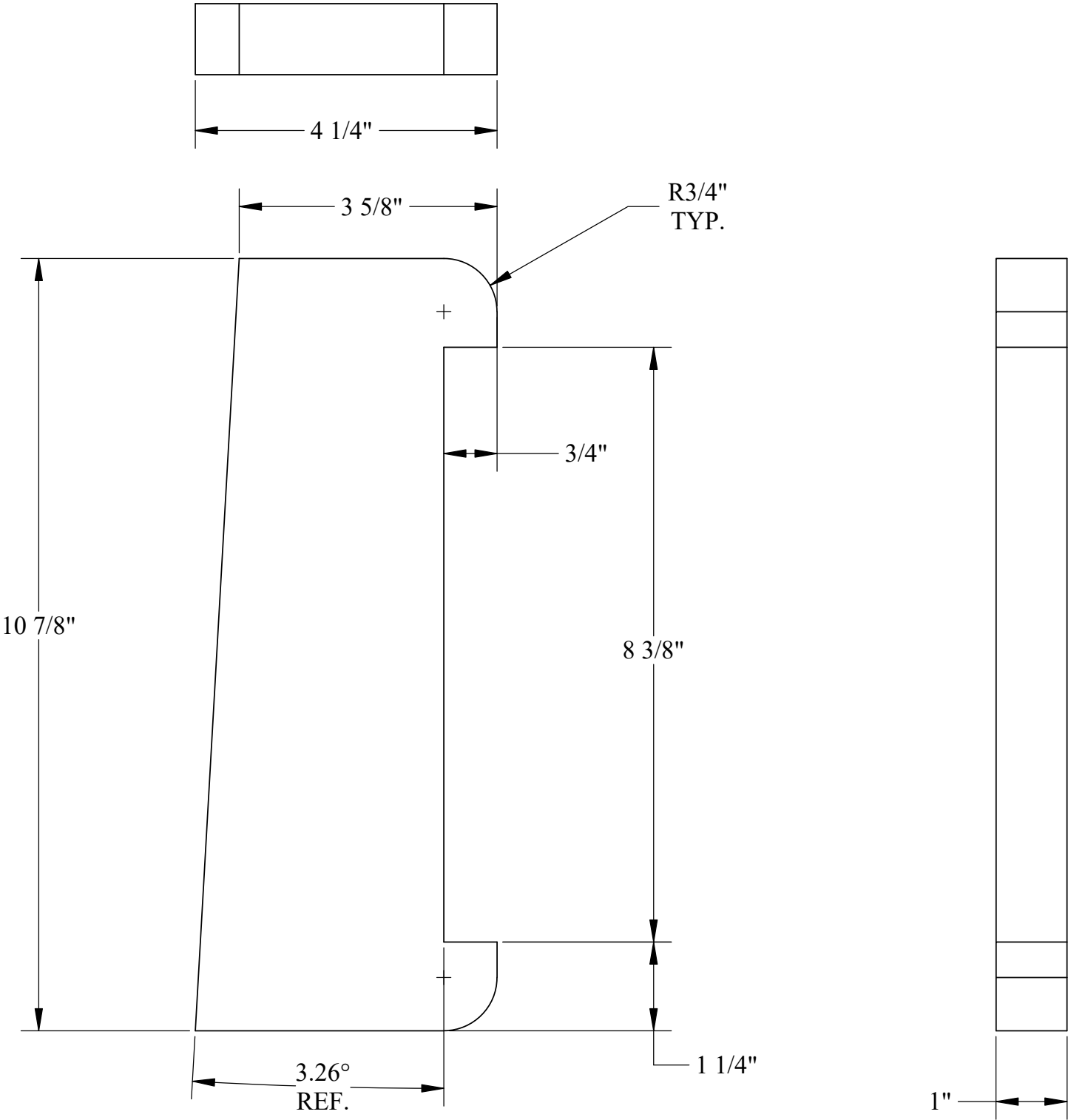
U.S.S. Monitor Steam Engine

Material Brass	Drawn By - Date RWC 10-2018	Sub-Assembly Connecting Rods
Weight (Lbs) 17.24	Connecting Rod Bearing-Small-A	
Scale 1:2		
Part # CR 4		



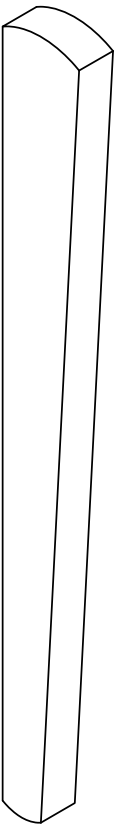
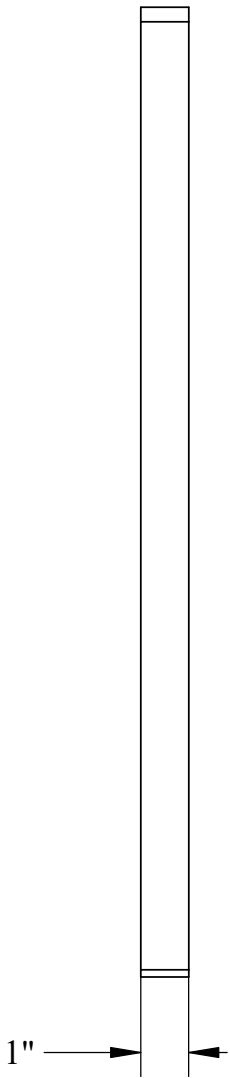
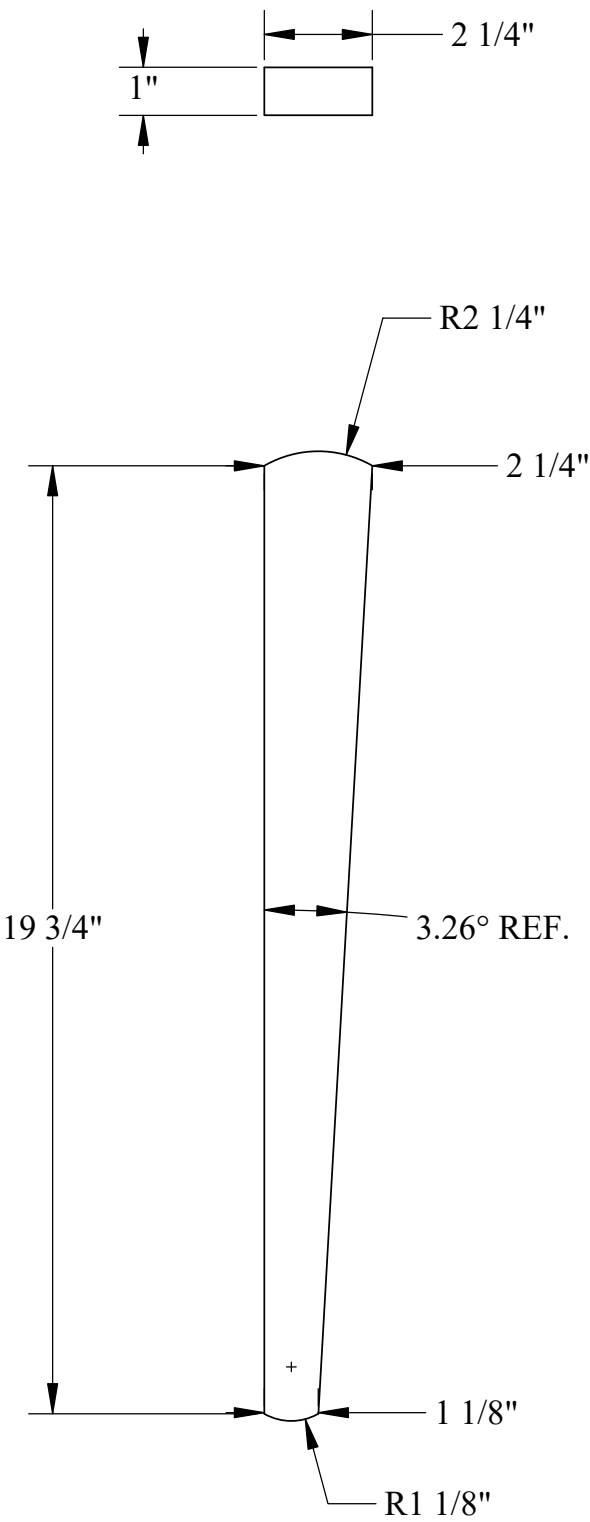
U.S.S. Monitor Steam Engine

Material Brass	Drawn By - Date RWC 10-2018	Sub-Assembly Connecting Rods
Weight (Lbs) 12.31	Connecting Rod Bearing-Small-B	
Scale 1:2		
Part # CR 5		



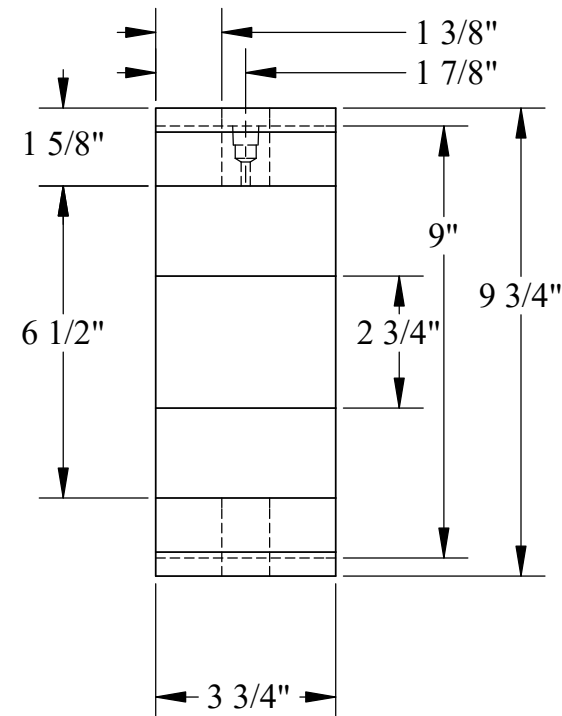
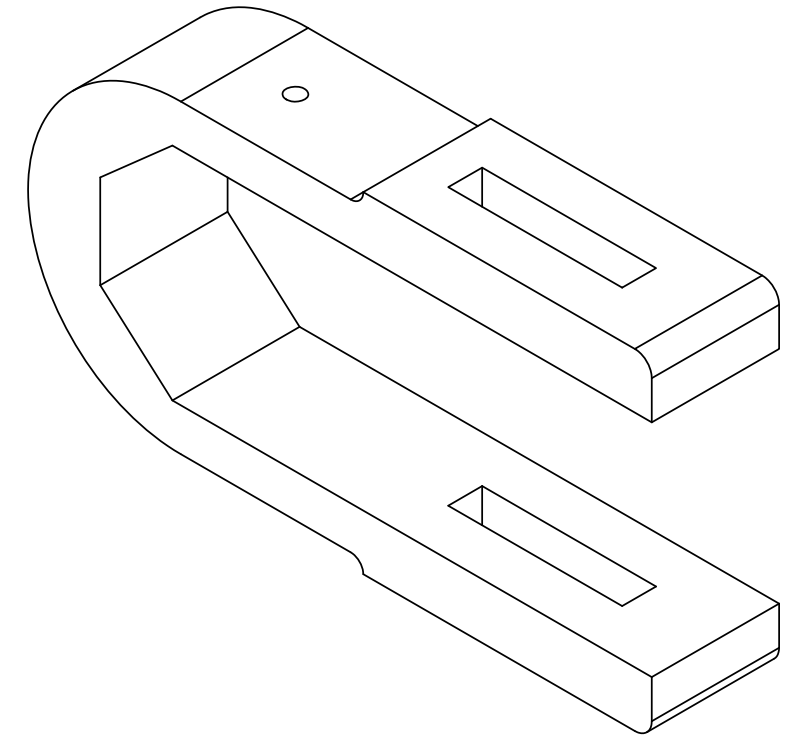
U.S.S. Monitor Steam Engine

Material STEEL	Drawn By - Date RWC 10-2018	Sub-Assembly Connecting Rods
Weight (Lbs) 10.37	Description Connecting Rod Gib	
Scale 1:2		
Part # CR 6		



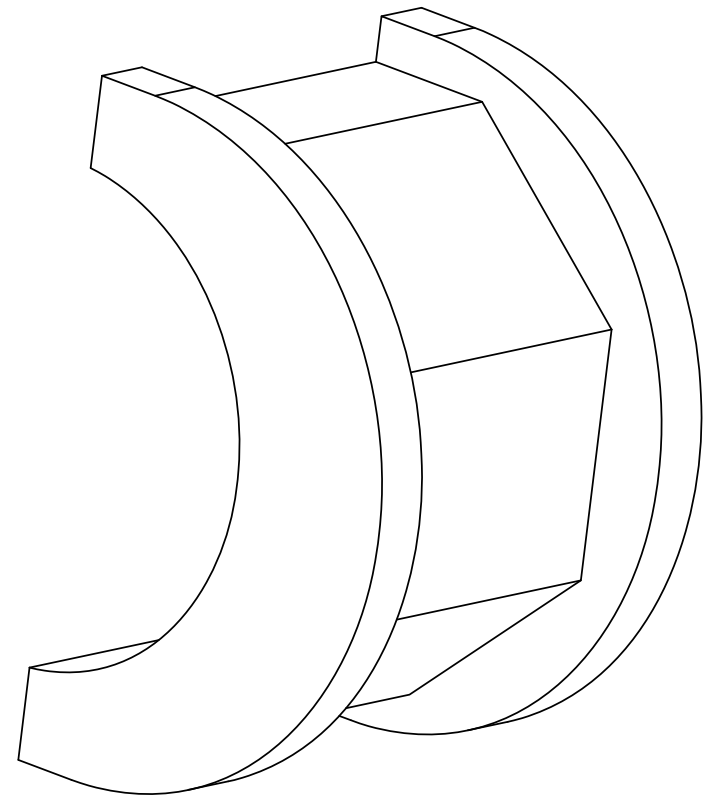
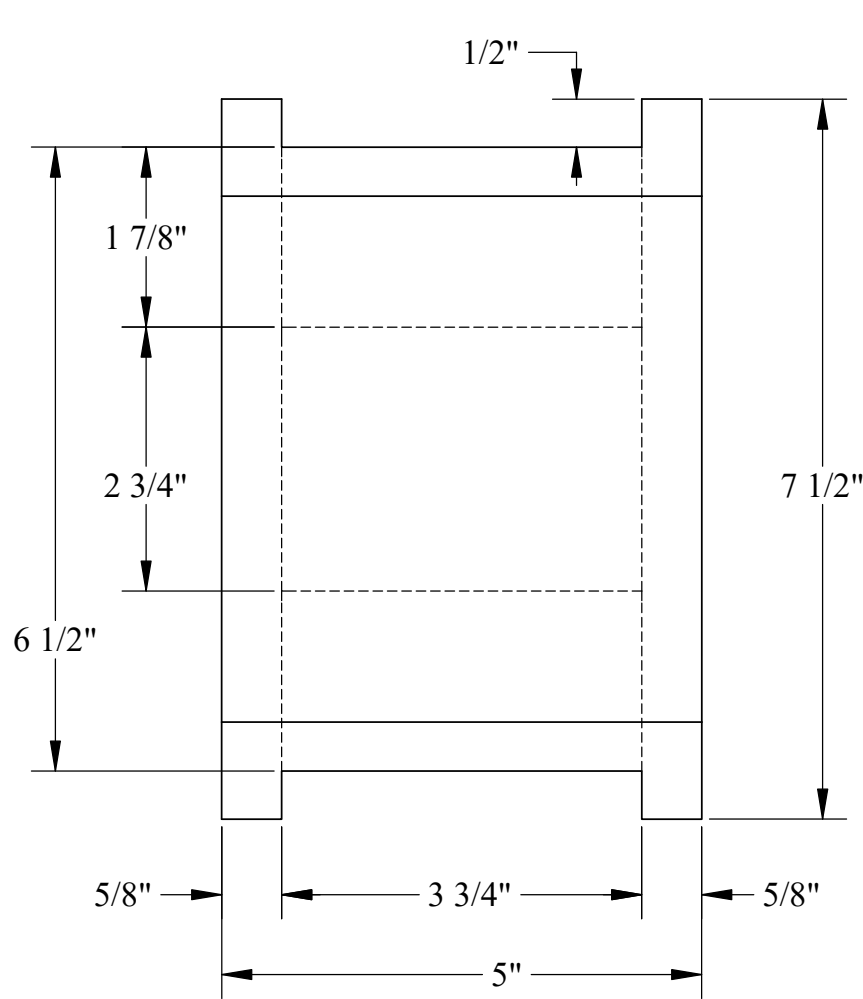
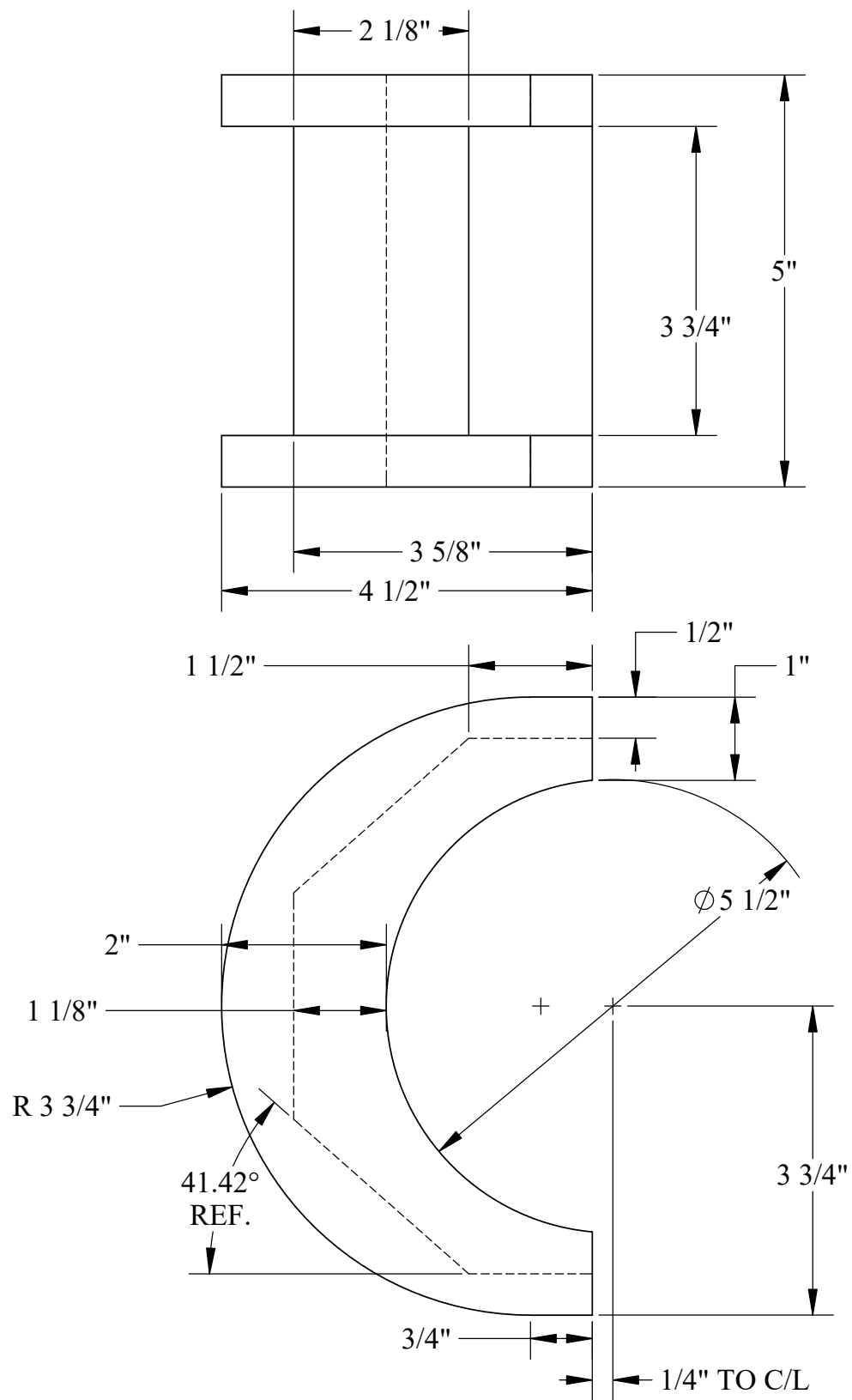
U.S.S. Monitor Steam Engine

Material STEEL	Drawn By - Date RWC 10-2018	Sub-Assembly Connecting Rods
Weight (Lbs) 9.68	Description Connecting Rod Bearing-Cotter Pin	
Scale 1:4		
Part # CR 7		



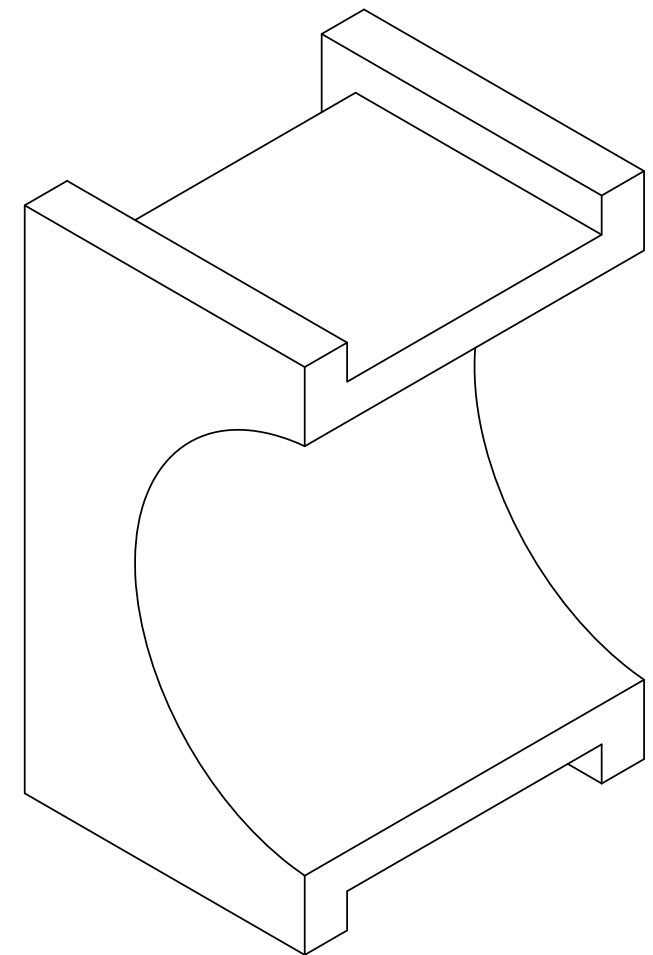
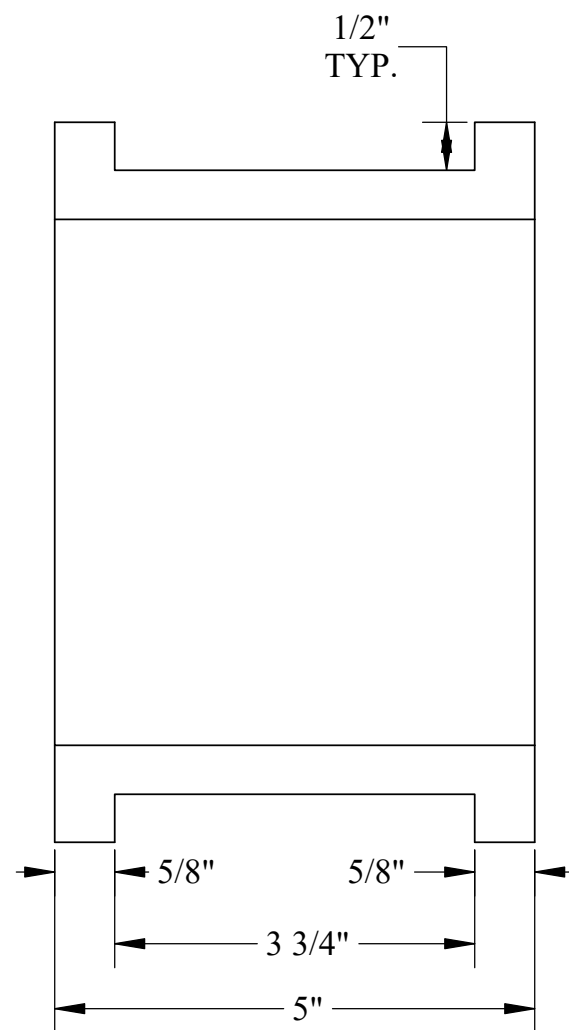
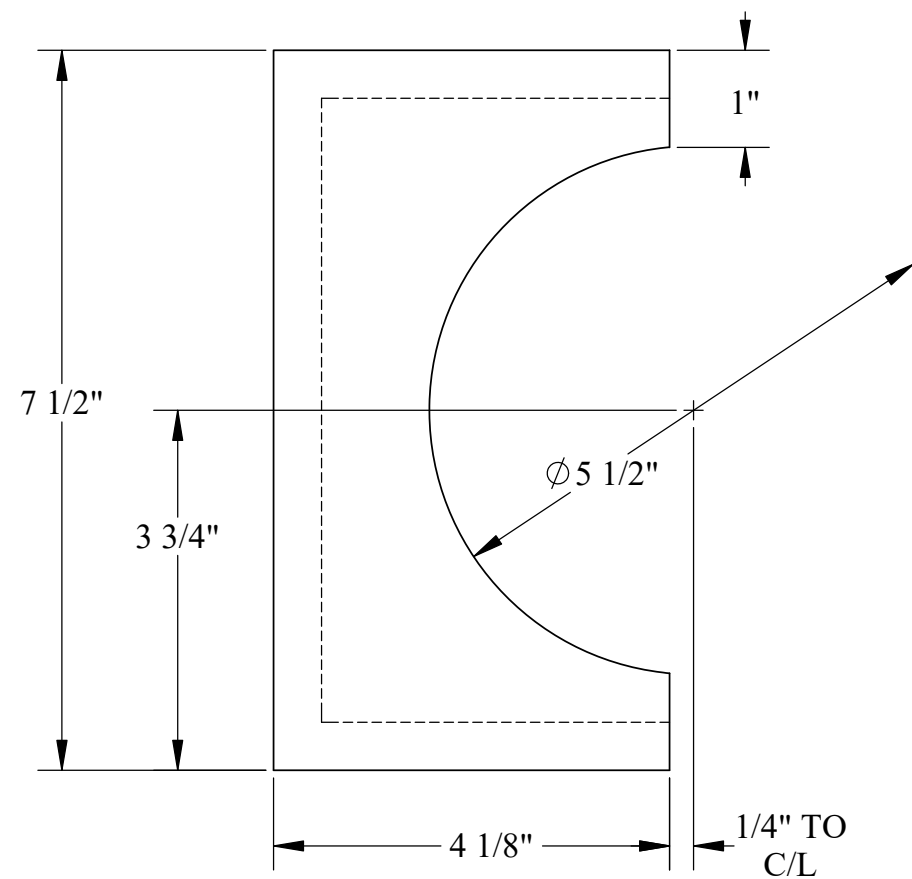
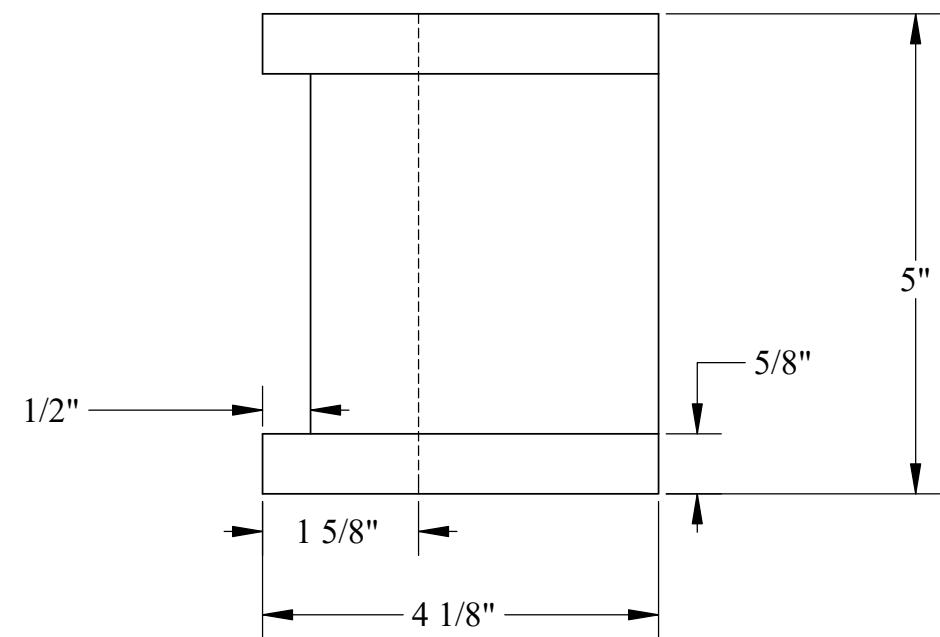
U.S.S. Monitor Steam Engine

Material	Drawn By - Date	Sub-Assembly
STEEL	RWC 10-2018	Connecting Rods
Weight (lbs)	Description	
60.89		
Scale		
1:4	Bearing Strap-Large	
Part #		
CR 8		



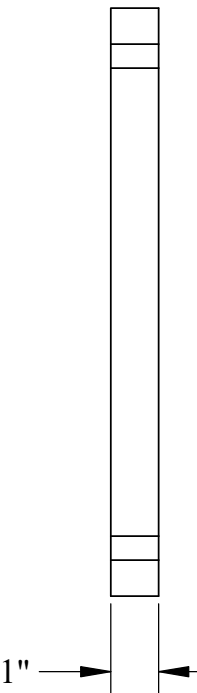
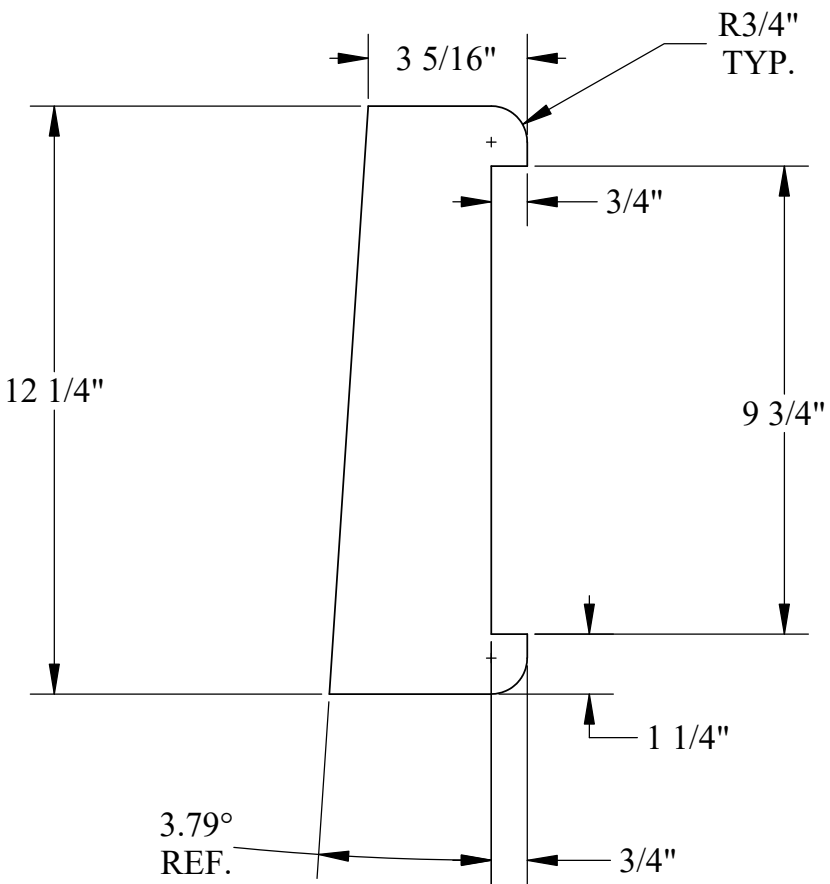
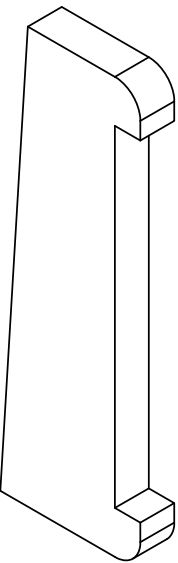
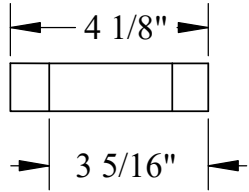
U.S.S. Monitor Steam Engine

Material Brass	Drawn By - Date RWC 10-2018	Sub-Assembly Connecting Rods
Weight (Lbs) 17.05	Connecting Rod Bearing-Large-B	
Scale 1:2		
Part # CR 9		



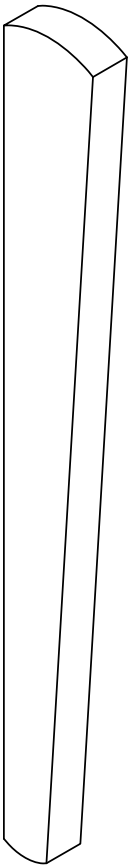
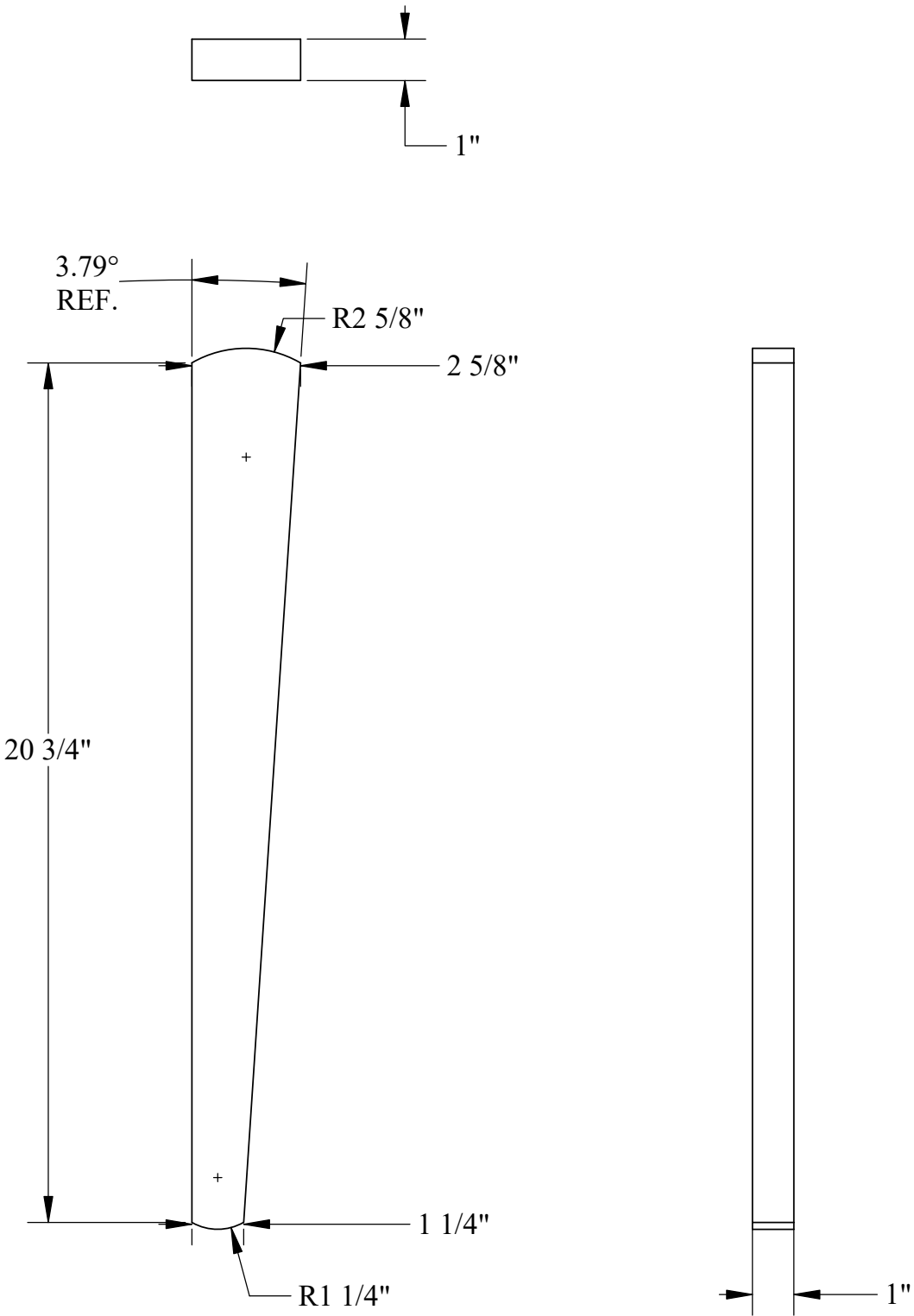
U.S.S. Monitor Steam Engine

Material Brass	Drawn By - Date RWC 10-2018	Sub-Assembly Connecting Rods
Weight (Lbs) 22.88	Description Connecting Rod Bearing-Large A	
Scale 1:2		
Part # CR 10		



U.S.S. Monitor Steam Engine

Material STEEL	Drawn By - Date RWC 10-2018	Sub-Assembly Connecting Rods
Weight (Lbs) 10.85	Large Gib	
Scale 1:4		
Part # CR 11		



U.S.S. Monitor Steam Engine

Material STEEL	Drawn By - Date RWC 10-2018	Sub-Assembly Connecting Rods
Weight (Lbs) 11.69	Description Large Cotter pin	
Scale 1:4		
Part # CR 12		